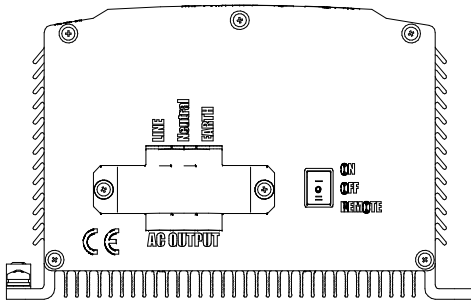
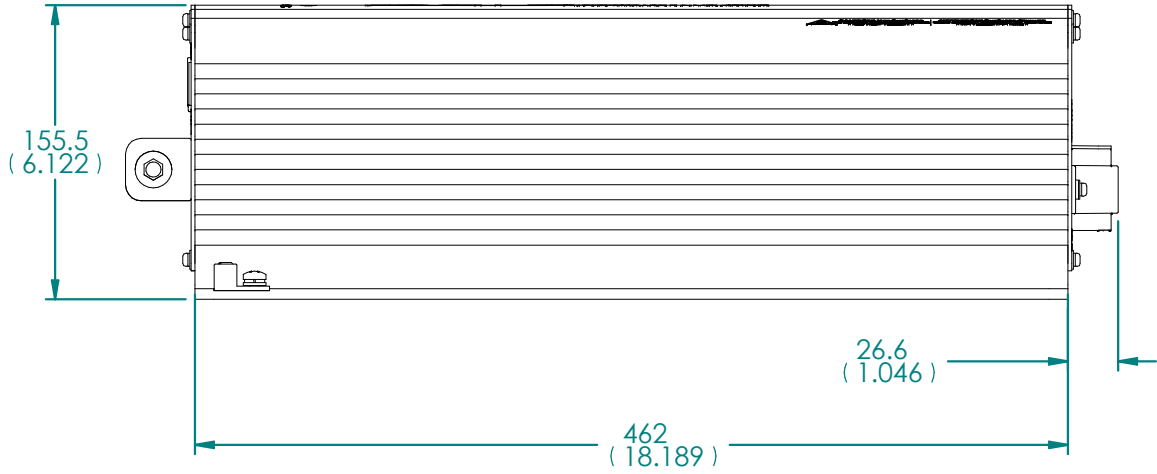
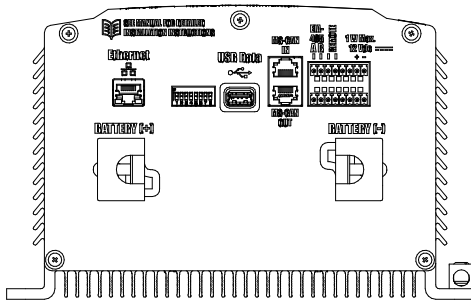
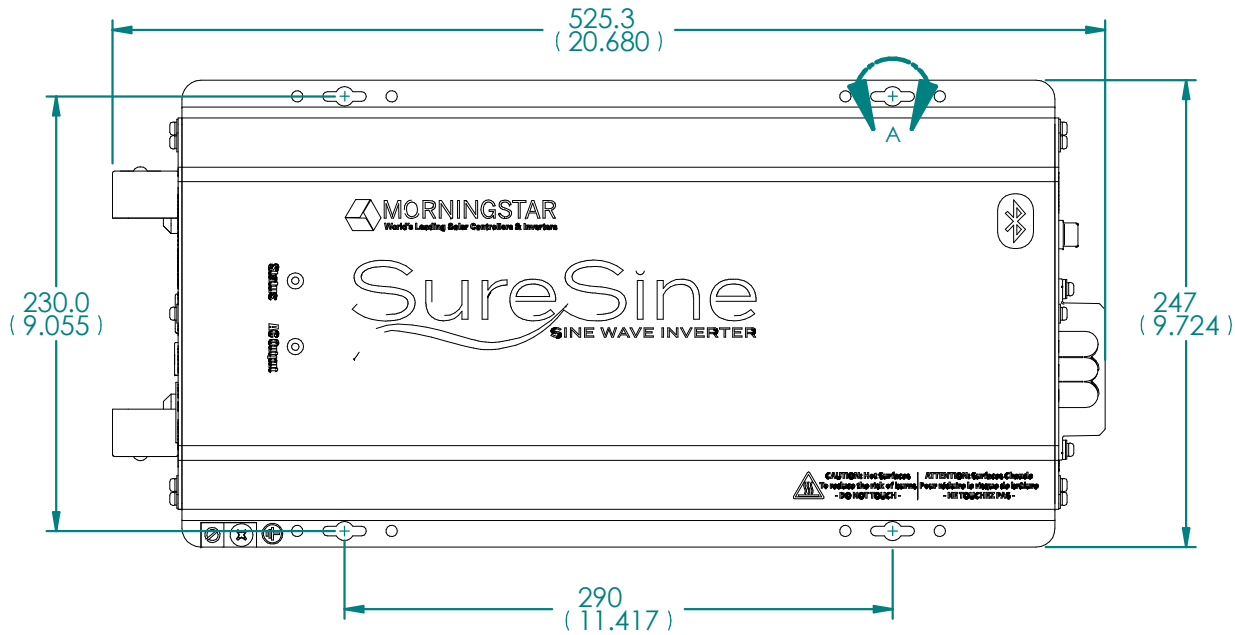
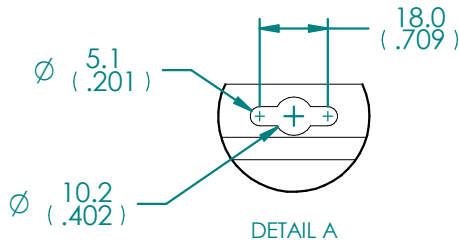


APPLICABLE SKUS:  
SI-1000-24-120-60-HW  
SI-1000-48-120-60-HW  
SI-1000-24-230-50-HW  
SI-1000-48-230-50-HW  
SI-1000-48-127-60-HW  
SI-1000-48-220-60-HW  
SI-1250-48-120-60-HW  
SI-1250-24-230-50-HW  
SI-1250-48-230-50-HW  
SI-1250-48-127-60-HW  
SI-1250-48-220-60-HW

REVISION HISTORY		
REV	DESCRIPTION	DATE
1	INITIAL RELEASE	03/21/2023



UNLESS OTHERWISE SPECIFIED  
DIMENSIONS ARE IN MILLIMETERS  
UNTOLERANCED DIMENSIONS ARE BASIC

THIRD ANGLE PROJECTION

**MORNINGSTAR**

TITLE  
**1000W-1250W SURESINE  
INVERTER  
(TERMINAL AC OUTPUT)**

SIZE B	SHEET SCALE 1:4	SHEET 1 OF 1
--------	-----------------	--------------

THE INFORMATION CONTAINED IN THIS DRAWING AND ASSOCIATED ELECTRONIC CAD FILES IS THE SOLE PROPERTY OF MORNINGSTAR CORPORATION.  
ANY REPRODUCTION IN PART OR AS A WHOLE IS STRICTLY PROHIBITED WITHOUT THE WRITTEN PERMISSION OF MORNINGSTAR CORPORATION.